

Process Presentation
Lighting
Iron - Furniture - Sculpture
Legrand – Lumicor – LED

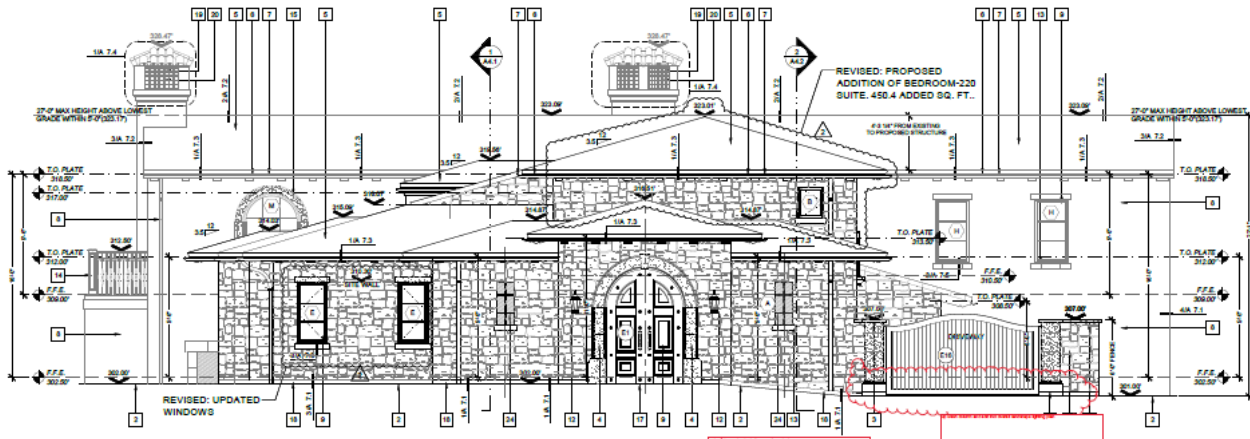
CONSULTING
DESIGN & MANUFACTURING
ADG Lighting
Architectural Detail Group, Inc

Newport Beach, Agoura Hills
Projects World Wide

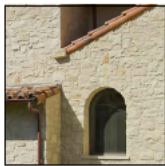


AIA California
Central Coast

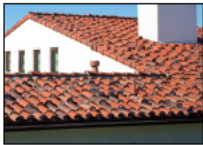




1 SOUTH ELEVATION
1/4" = 1'-0"



STONE MATERIAL



ROOF MATERIAL

- ELEVATION NOTES**
- EXTERIOR STAIR RISER, SEE MATERIAL AND FINISH INDEX, RISE AND RUN PER LANDSCAPE ARCHITECT'S DRAWING. ALSO REFER TO CIVIL PLAN FOR FINISHED SURFACE ELEVATIONS AT TOP AND/OR BOTTOM OF STAIRS.
 - FINISHED GRADE, ALL SITE WORK TO BE COMPLETED IN STRICT ACCORDANCE WITH THE SOIL ENGINEER'S RECOMMENDATIONS AND SPECIFICATIONS. WALL CAP PER MATERIAL AND FINISH INDEX.
 - ENTRY SURROUND, TEXAS CUT Limestone AND BRICK, SEE DETAILS.
 - REMOVE CLAY BARREL TILE ROOF. BULK MESSOR TOP WITH LIME PAVE. GROUT EXCAVATION TOP SURFACE. SOLID GROUT AT SAVE AS BRIDG TOP DOUBLE MESSOR TILE STARTER COURSE. DOUBLE BARREL PAN STARTER COURSE. 4" STOK AT 90°.
 - TOP TILE COURSE WITH 2" PAN EXPOSURE BETWEEN ROOFS.
 - SAVE DETAIL THAT MEET WILD DRY WOOD DECORATIVE RAFTER TAIL, SEE DETAIL. SPACING AT 24" WITH TRAY BRACING.
 - HALF ROUND COVERED GUTTERS 4" MIN DIAMETER COPPER DOWNSPOUTS. AVOID CONTACT BETWEEN DIFFERENT METALS. SEE ALL COMPONENTS TO SUB-SURFACE DRAINAGE SYSTEM PER CIVIL. ALSO SEE SAVE DETAIL FOR MORE INFORMATION.
 - MANUFACTURED STONE VENER BY BLOCKADO Limestone, APPROX. 10-12 POUNDS PER SQUARE FOOT. COMBLES WITH SUBSTITUTES REFER TO STRUCTURAL ENGINEER'S DRAWINGS FOR ANCHORING. REFER TO MATERIAL + FINISH INDEX FOR STONE CONNECTION + COLORING.
 - WOOD WINDOWING AND DOORS WITH TRUE DIVIDED LITES UNLESS NOTED OTHERWISE ON SCHEDULES.
 - GLASS ON ALL SWINGING DOORS, GLAZING WITHIN 1/4" OF THE ADJACENT FLOOR FINISHING SURFACE SHALL BE FULLY TEMPLERED.
 - GARAGE DOORS: OVERHEAD SECTIONAL DOOR, SEE MATERIAL AND FINISH INDEX AND DOOR SCHEDULE FOR SPECIFICATIONS.
 - BRAND NAME FUTURE LOCATION, OWNER APPROVED FIXTURE, SEE SHEETS S-1, S-1.1, S-1.2, AND S-1.3 FOR EXACT LOCATIONS.
 - WINDOW SILLS: RE: MATERIAL AND FINISH INDEX AND WINDOW SILL DETAILS AS NOTED.
 - HANDCRAFTED WROUGHT IRON GUARDRAILS. SEE DETAILS FOR DESIGN. SEE MATERIAL + FINISH INDEX FOR FINISH.
 - STONE TRIM SURROUND, SEE STONE VENER DETAILS ON SHEET A-2.9.
 - GUARDRAILS SHALL BE A MINIMUM HEIGHT OF 42" MEASURED FROM TOP OF FINISHED SURFACE (T.O.F.S.) UNLESS NOTED OTHERWISE. OPEN GUARDRAILS SHALL HAVE INTERMEDIATE MEMBERS SPACED SUCH THAT NO SPHERE OF 4" DIAMETER SHALL PASS THROUGH.
 - PAVERS DECK MATERIAL, SLOPE ALL DECK SURFACES 2% TOWARDS DRAIN. SEE ARCHITECTURAL PLAN AND/OR CIVIL ENGINEER'S DRAWINGS. SEE MATERIAL + FINISH INDEX.
 - CONTINUOUS METAL WEEP SCREED MATERIAL PER SPECIFICATIONS. LOCATE WEEP SCREED AT LOWEST POSSIBLE POINT OF CONCRETE FOOTING AND ALL EXTERIOR WALLS. WEEP AT STONE WALLS TO BE MET STONE CARRY WEEP WITH QUALITY BRITISH DRINK. WALL SITS TO BE OVER BUILDING PAPER. AT BASE PROVIDE CONTINUOUS SHEET METAL FLASHING UNDER SILE QUARTY SYSTEM. SEE DETAIL.
 - PROVIDE APPROVED DRAIN ARRESTORS AT TOPS OF ALL FIREPLACE CHIMNEYS. TOP OF CHIMNEY FLUE SHALL BE MIN. OF 2" ABOVE ANY ROOF OR HORIZONTAL SURFACE WITHIN 10' SPAN ARRESTORS SHALL BE PAINTED BLACK, AND SCHEDULED FROM VIEW WITH A 1" PLAT CORNER OR IRON BAR STOOD CORNER AT RIGHT ANGLES. SPACE GRIDS AS REQUIRED FOR SUFFICIENT AIR FLOW.
 - CHIMNEY CAP WITH COPPER MESH AND MESSOR CLAY ROOF TILES, RE: DETAIL.
 - SITE RETAINING WALLS: SEE GRADING PLAN FOR ELEVATIONS. SEE STRUCTURAL ENGINEER'S DRAWINGS FOR CONSTRUCTION. PROVIDE GRADUAL SLOPES AND DRAINAGE AT FOOTING OF WALL. SEE STRUCTURAL AND CIVIL ENGINEER'S DETAILS. SEE GRADING PLAN FOR DRAINS. PROVIDE WATERPROOFING SYSTEM SEE SPECIFICATIONS AT ALL RETAINING WALLS.
 - GARAGE VENTING PER C.B.G. REQUIREMENTS.
 - GLASS GUARDRAILS, SEE DETAILS FOR DESIGN, 42" HEIGHT MIN.
 - NON-RETAINING SITE WALL, SEE DETAILS.
 - EXPOSED WOOD BEAMS, COLLARS AND HEADERS - REFER TO DETAILS.
 - 1/2" STUCCO OVER THE EXTERIOR WALL COVERING OVER WEATHER RESISTIVE BARRIER SEE SPECIFICATIONS. COLOR AND FINISH PER MATERIAL AND FINISH INDEX. ALL EXTERIOR CORNERS, FINISH, TEXTURE AND COLOR TO BE APPROVED PRIOR TO START.

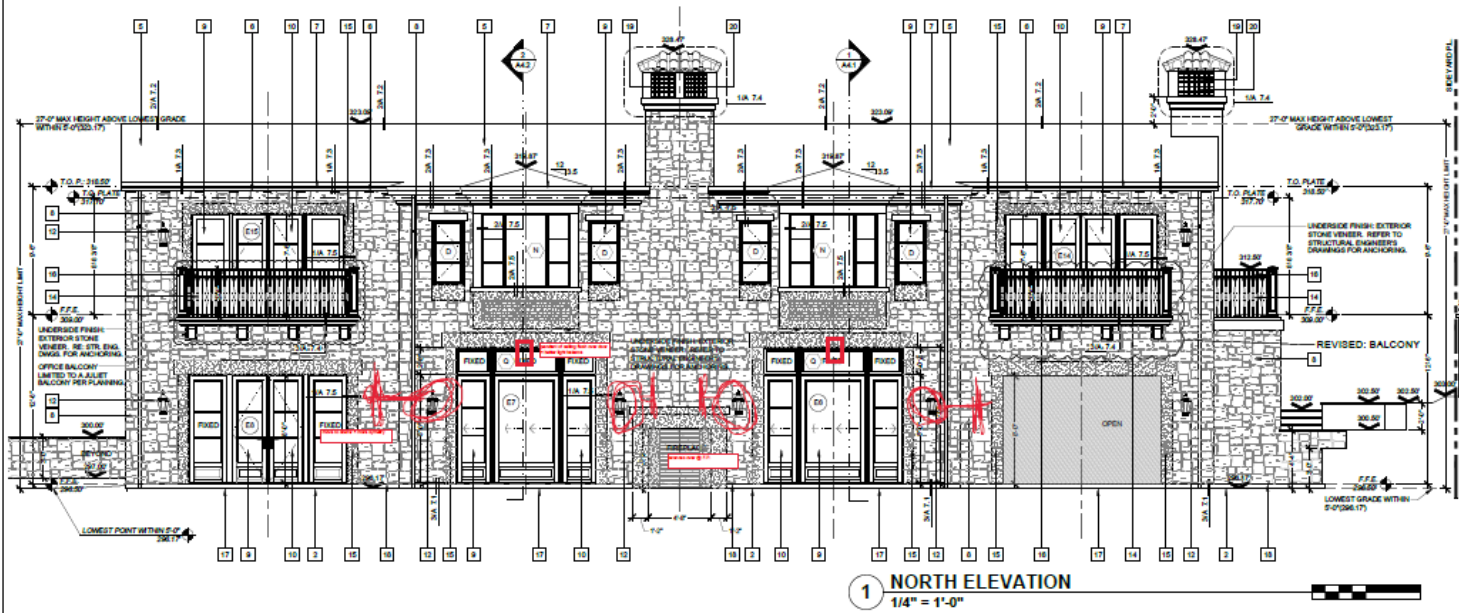
OWNER: PRIVATE RESIDENCE
5207 TORREANCE CA - 90505

PROPOSED
EXTERIOR ELEVATIONS

DATE: NOVEMBER 15, 2018
SCALE: 1/4" = 1'-0"
JOB NUMBER: 18105-18

A-3.1

this screen describes our notes as to the proper placement of exterior lighting against the original plan



1 NORTH ELEVATION
1/4" = 1'-0"

- ELEVATION NOTES**
- EXTERIOR STAIR RISER, SEE MATERIAL AND FINISH SCHEDULE. RISER AND BALUSTRADE LANDSCAPE ARCHITECT'S DRAWINGS. ALSO REFER TO CIVIL PLANS FOR FINISHED GRADE ELEVATIONS AT TOP AND BOTTOM OF STAIRS.
 - FINISHED GRADE, ALL SITE WORK TO BE COMPLETED IN STRICT ACCORDANCE WITH THE SOils ENGINEER'S RECOMMENDATIONS AND SPECIFICATIONS.
 - WALL CAP PER MATERIAL AND FINISH SCHEDULE.
 - DIRTY SURROUND, TEXAS CUT LIMESTONE AND BRICK, SEE DETAILS.
 - RECLAMED CLAY BRICK, TILE ROOF.
 - BAWA RISER/TOP WITH SAME PAINT GROUT EACH BRICK/TOP PLACE.
 - ROOF DRAINLET AT GUTTER OR BRICK/ROOF DRAIN/TILE AT GUTTER COURSE.
 - DOOR/SWING, PIN STRUTTER COURSE, SEE DETAILS.
 - TOE CURB WITH 1/2" FRANKLIN ROOF BETWEEN ROOMS.
 - FAUCET/CRACK TIGHT WITH 1/2" FRANKLIN ROOF/DOOR/STAIR TAILS, SEE DETAILS. SPACING 32" O.C. WITH TRIM FINISHING.
 - HALF ROUNDED CORNER, 1/2" FRANKLIN ROOF/DOOR/STAIR TAILS, ALSO CONTACT BETWEEN DISCREET METALS. TRAIL ALL DOWNSPOUTS TO BE INFORMATION.
 - MANUFACTURED STONE VENEER BY ELKORADO (ELKORADO), APPROX. 10-15 TO 20% BLENDED BLANKS/ROCK, COME WITH 1/2" SUB-CUT, REFER TO STRUCTURAL ENGINEER'S DRAWINGS FOR ANCHORING. REFER TO MATERIALS & FINISH SCHEDULE FOR STONE COMPOSITION & COLORING.
 - WOOD WINDOW AND DOORS WITH TRUE DIVIDED LITES UNLESS NOTED OTHERWISE ON SCHEDULES.
 - GLASS ON ALL SWINGING DOORS, GLAZING WITHIN 1" OF THE ADJACENT FLOOR FINISH SURFACE SHALL BE FULLY TAMPED.
 - GARAGE DOORS, OVERHEAD, SECTIONAL DOOR, SEE MATERIAL AND FINISH SCHEDULE AND DOOR SCHEDULES FOR SPECIFICATIONS.
 - BRIDGE LIGHT FIXTURE LOCATION, OWNER APPROVED FIXTURE, SEE SHEETS 11.1, 11.2 AND 11.3 FOR BRIDGE LOCATIONS.
 - WINDOW SILL, SEE MATERIAL AND FINISH SCHEDULE AND WINDOW SILL DETAILS.
 - HANDCRAFTED WROUGHT IRON GUARDRAILS, SEE DETAILS FOR DESIGN AND MATERIALS & FINISH SCHEDULE FOR FINISH.
 - STONE TRIM SURROUND, SEE STONE VENEER DETAILS ON SHEET A-7.9.
 - GUARDRAILS SHALL BE A MINIMUM HEIGHT OF 42" MEASURED FROM TOP OF FINISHED SURFACE. 1/2" SUB-CUT UNLESS NOTED OTHERWISE. OPEN GUARDRAILS SHALL HAVE INTERLACED MEMBERS SPACED SUCH THAT NO SPHERE OF 4" DIAMETER WILL PASS THROUGH.
 - FAVORS DECK MATERIAL, BUCKLE ALL DECK SURFACES 2% TOWARDS GRADE, SEE ARCHITECTURAL PLANS AND CIVIL ENGINEER'S DRAWINGS. SEE MATERIALS & FINISH SCHEDULE.
 - CONTROLS METAL WEEP SCREWS (MATERIAL PER SPECIFICATIONS) LOCATE WEEP SCREWS AT LOWEST CORNER POINT OF CONCRETE FOOTING AND SILL PLATE JUNCTURE (SEE DETAILS). MIN. OF 7" ABOVE BATH OR P-TRAP AND 6" ABOVE WEEP FROM 150W WITH A TYPICAL COURSE OR RICH BAR STOCK JOINED AT RIGHT ANGLES. SPACE GRID AS REQUIRED FOR SUFFICIENT AIRFLOW.
 - PROVIDE APPROVED SPAN ARRESTORS AT TOP OF ALL FREESTANDING WALLS. TOP OF CORNER FLUE SHALL BE MIN. OF 7" ABOVE ANY ROOF FLASHING AND BENCHING FROM 150W WITH A TYPICAL COURSE OR RICH BAR STOCK JOINED AT RIGHT ANGLES. SPACE GRID AS REQUIRED FOR SUFFICIENT AIRFLOW.
 - CHIMNEY CAP WITH COPPER MESH AND MISSISSAUGA CLAY ROOF TILE, SEE DETAIL.
 - SITE RETAINING WALLS, SEE GRADING PLANS FOR ELEVATIONS. SEE STRUCTURAL ENGINEER'S DRAWINGS FOR CONSTRUCTION. PROVIDE CORNER BARRIS/ROLL AND DRAINAGE AT FOOTING OF WALL (SEE STRUCTURAL AND CIVIL ENGINEER'S DETAILS). SEE GRADING PLANS FOR DRAINAGE. PROVIDE WATERPROOFING SYSTEM (SEE SPECIFICATIONS) AT ALL RETAINING WALLS.
 - GARAGE VENTING PER C.E.C. REQUIREMENTS.
 - GLASS GUARDRAILS, SEE DETAILS FOR DESIGN, 42" HEIGHT MIN.
 - W/ GRILLS AT OPENING, SEE DETAILS.
 - NON-RETAINING SITE WALL, SEE DETAILS.
 - EXPLODED WOOD BEAMS, COLUMNS AND HEADERS, REFER TO DETAILS.
 - TRIM STRUCK OVER THE EXTERIOR WALL, COVERING OVER WEATHER RESISTIVE BARRIER (SEE SPECIFICATIONS). COLOR AND FINISH PER MATERIAL AND FINISH SCHEDULE. ALL OUTSIDE CORNERS, FINISH, TEXTURE AND COLOR TO BE APPROVED PRIOR TO START.

CONTRACTOR TO VERIFY ALL MATERIALS, FINISHES, AND COLORS WITH THE ARCHITECT. ALL MATERIALS, FINISHES, AND COLORS TO BE APPROVED PRIOR TO START. ALL MATERIALS, FINISHES, AND COLORS TO BE APPROVED PRIOR TO START. ALL MATERIALS, FINISHES, AND COLORS TO BE APPROVED PRIOR TO START.

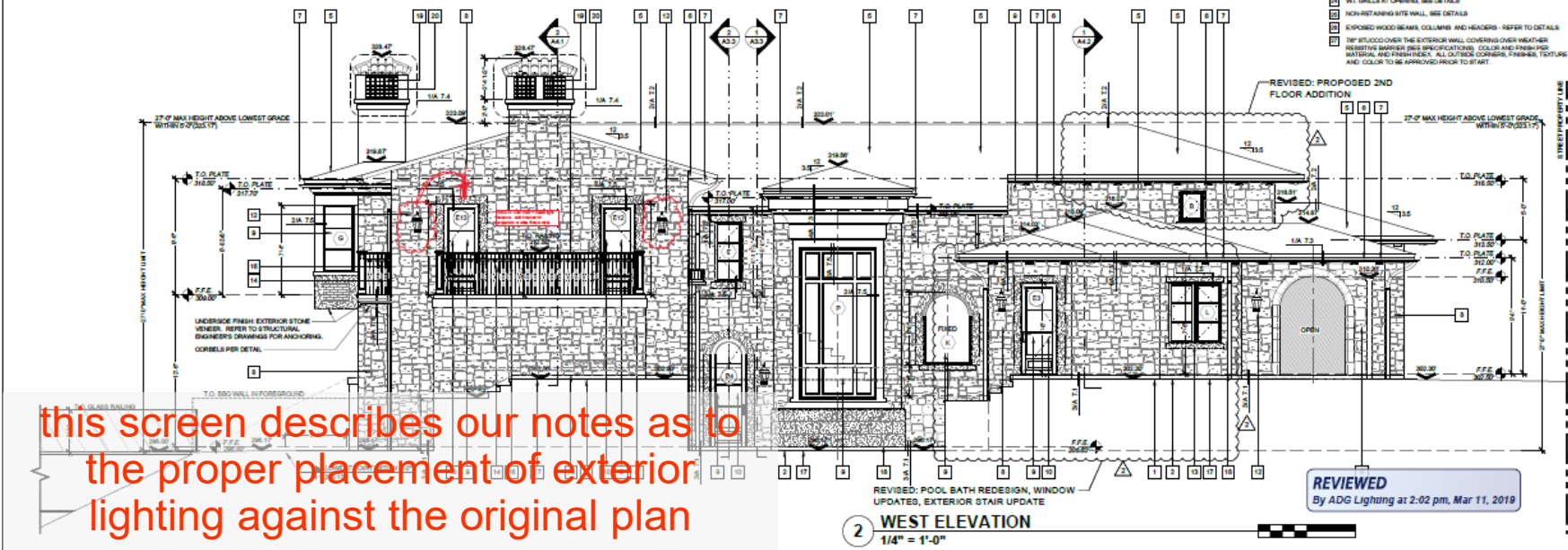
PRIVATE RESIDENCE
5007 PASEO DE LAS TORTUGAS
TORRANCE, CA - 90505

PROPOSED
EXTERIOR ELEVATIONS

DATE: NOVEMBER 16, 2018
SCALE: 1/4" = 1'-0"
JOB NUMBER: M05-18

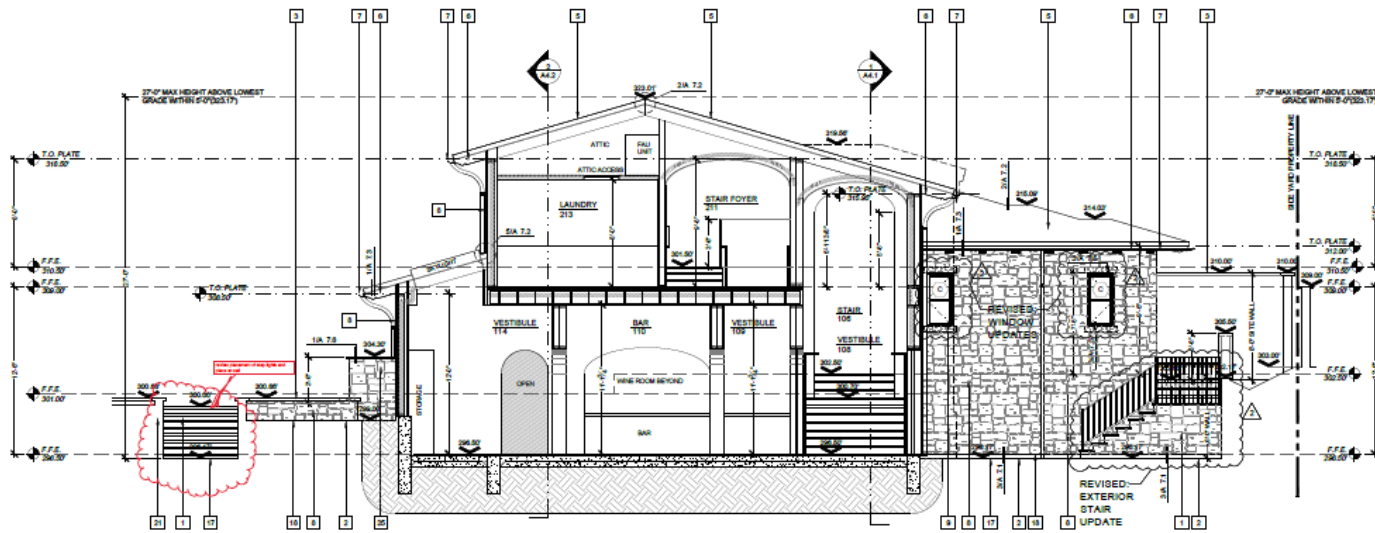
ARCHITECT
ADG LIGHTING
STATE OF CALIFORNIA

this screen describes our notes as to the proper placement of exterior lighting against the original plan

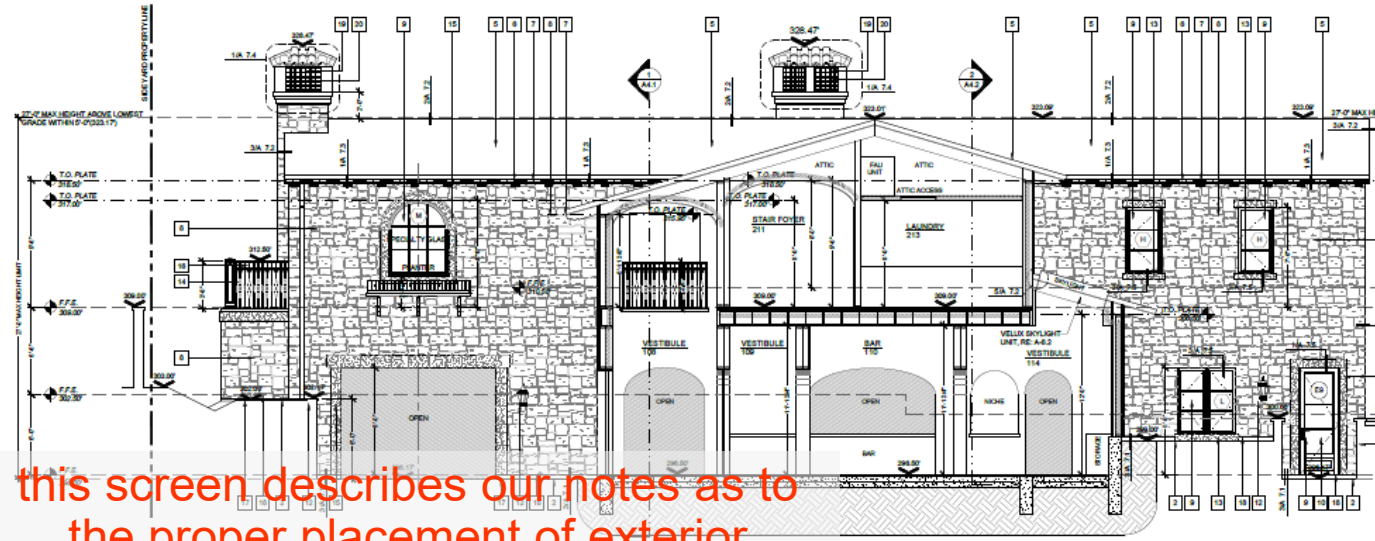


2 WEST ELEVATION
1/4" = 1'-0"

REVIEWED
By ADG Lighting at 2:02 pm, Mar 11, 2019



1 NORTH COURTYARD ELEVATION + SECTION
1/4" = 1'-0"



2 SOUTH COURTYARD ELEVATION + SECTION
1/4" = 1'-0"

this screen describes our notes as to the proper placement of exterior lighting against the original plan

ELEVATION NOTES

- 1 EXTERIOR STAIR RISER, SEE MATERIAL AND FINISH INDEX. RISE AND RUN PER LANDSCAPE ARCHITECT'S DRAWINGS. ALSO REFER TO CIVIL PLANS FOR FINISHED SURFACE ELEVATIONS AT TOP AND/OR BOTTOM OF STAIRS.
- 2 FINISHED GRADE. ALL SITE WORK TO BE COMPLETED IN STRICT ACCORDANCE WITH THE SOLE ENGINEER'S RECOMMENDATIONS AND SPECIFICATIONS. WALL CAP PER MATERIAL AND FINISH INDEX.
- 3 ENTRY SURROUND: TEGAS CUT LIMESTONE AND BRICK. RE: DETAILS.
- 4 REDUCE CLAY BARREL, THE ROCK BALM MESSON TOP WITH SAME PAIS.
- 5 SOLID GROUT AT EACH END BRIDGE. DOUBLE MISSION TILE STAIRER COURSE. DOUBLE BRICKS. PAIR FANTER COURSE. 4" STAIR AT VPS.
- 6 TOP OF COURSE WITH 2" PAW ENCLOSURE BETWEEN ROOF.
- 7 SAVE: CEILING TRIGHT NUT HULL DRY MOOD DECORATIVE RAFTER TAILS. RE: DETAILS. GRADING SEE WITH PLAN DRAWING.
- 8 HALF ROUND COPPER GUTTER (5") W/ 7" DIAMETER COPPER DOWNSPOUTS. WOOD CONTACT BETWEEN DIFFERENT METALS. TO ALL DOWNSPOUTS TO SUB-SURFACE DRAINAGE SYSTEM PER CAL. ALSO SEE EAVE DETAIL FOR MORE INFORMATION.
- 9 MANUFACTURED STONE VENEER BY ELDORADO LIMESTONE, APPROX. 10-12 POUNDS PER SQUARE FOOT. COMPLIES WITH ICC ESR-1578. REFER TO STRUCTURAL ENGINEER'S DRAWINGS FOR ANCHORS. REFER TO MATERIAL + FINISH INDEX FOR STONE COMPOSITION + COLORING.
- 10 WOOD WINDOWS AND DOORS WITH TRUE DIVIDED LITES UNLESS NOTED OTHERWISE ON SCHEDULES.
- 11 GLASS ON ALL SWINGING DOORS: GLAZING WITHIN 1" OF THE ADJACENT FLOOR WALKING SURFACE SHALL BE FULLY TYPED.
- 12 GARAGE DOORS: OVERHEAD, SECTIONAL DOOR. SEE MATERIAL AND FINISH INDEX AND DOOR SCHEDULE FOR SPECIFICATIONS.
- 13 BRONZE LIGHT FIXTURE LOCATION, OWNER APPROVED FIXTURE. SEE SHEETS S-1, S-2, AND S-3 FOR EXACT LOCATIONS.
- 14 WOODWORK: RE: MATERIAL AND FINISH INDEX AND WINDOW SILL DETAILS AS NOTED.
- 15 WOOD-CRAFTED WRIGHT IRON GUARDRAILS. SEE DETAILS FOR DESIGNS. SEE MATERIAL + FINISH INDEX FOR FINISH.
- 16 STONE TRIM SURROUND, SEE STONE VENEER SCHEDULE ON SHEET A-7.8.
- 17 GUARDRAILS SHALL BE A MINIMUM HEIGHT OF 42" MEASURED FROM TOP OF FINISHED SURFACE (T.O.F.) UNLESS NOTED OTHERWISE. OPEN GUARDRAILS SHALL HAVE INTERMEDIATE MEMBERS SPACED SUCH THAT NO SPHERE OF 4" DIAMETER SHALL PASS THROUGH.
- 18 FINISH DECK MATERIAL. SLOPE ALL DECK SURFACES 2% TOWARDS DRAIN. SEE ARCHITECTURAL PLANS AND/OR CIVIL ENGINEER'S DRAWINGS. SEE MATERIAL + FINISH INDEX.
- 19 CONTINUOUS METAL WEEP SCREWS (MATERIAL PER SPECIFICATIONS). LOCATE WEEP SCREWS AT LOWEST POSSIBLE POINT OF CONCRETE FOOTING AND SILL PLATE JUNCTION (SEE DETAILS). MIN. OF 7" ABOVE EARTH OR 2" ABOVE FINISH AREAS. WEEP AT STONE WALLS TO BE METELO QUALITY WEEP WITH SURE CAVITY SYSTEM ON WALL. WALL SYSTEM TO BE OVER BUILDING PAPER. AT BASE PROVIDE CONTINUOUS SHEET METAL FLASHING UNDER SURE CAVITY SYSTEM. SEE DETAILS.
- 20 PROVIDE APPROVED SPARK ARRESTORS AT TOP OF ALL FIREPLACE CHIMNEYS. TOP OF CHIMNEY FLUE SHALL BE A MIN. OF 7" ABOVE ANY ROOF OR HORIZONTAL SURFACE WITHIN 10'. SPARK ARRESTORS SHALL BE PAINTED BLACK AND SCHEDULED FROM NEW APTA 1 PLAT COPPER OR BRASS STOCK JOINED AT RIGHT ANGLES. SPARK GRID AS REQUIRED FOR SUFFICIENT AIR FLOW.
- 21 CHIMNEY CAP WITH COPPER MESH AND MISSION CLAY ROOF TILES. RE: DETAIL.
- 22 SITE RETAINING WALLS. SEE GRADING PLANS FOR ELEVATIONS. SEE STRUCTURAL ENGINEER'S DRAWINGS FOR CONSTRUCTION. PROVIDE GRAVEL, BACK-FILL AND DRAINAGE AT FOOTING OF WALL. SEE STRUCTURAL AND CIVIL ENGINEER'S DETAILS. SEE GRADING PLAN FOR DRAIN. PROVIDE WATERPROOFING SYSTEM (SEE SPECIFICATIONS) AT ALL RETAINING WALLS. GARAGE VENTING PER C.E.C. REQUIREMENTS.
- 23 GLASS GUARDRAILS. SEE DETAILS FOR DESIGNS. 42" HEIGHT MIN.
- 24 WALL GRILLS AT OPENING. SEE DETAILS.
- 25 NON-RETAINING SITE WALL. SEE DETAILS.
- 26 EXPOSED WOOD BEAMS, COLLARS AND HEADERS - REFER TO DETAILS.
- 27 THE FINISH COVER THE EXTERIOR WALL, COORDINATE COLOR AND FINISH PER MATERIAL AND FINISH INDEX. ALL OUTSIDE CORNERS, FINISHES, TEXTURE AND COLOR TO BE APPROVED PRIOR TO START.

PRIVATE RESIDENCE
 5207 PASEO DE LAS TORTUGAS
 TORRANCE, CA - 90505

PROPOSED
 EXTERIOR ELEVATIONS

REVISIONS
 CITY REVIEW
 DATE: NOVEMBER 15, 2018
 SCALE: 1/4" = 1'-0"
 JOB NUMBER: M04-18

A-3.3



this screen describes our notes as to the proper placement of exterior lighting against the original plan

REVIEWED

By ADG Lighting at 12:18 pm, Mar 11, 2019

prepared by ADG Lighting
 CABN Residences 3 11 2019
 8-5-2019 work up per job walk

818-597-9494 949-207-3123

TRADE PRICES

All items below are suggested scope based on caliber of this home/ alternatives may be substituted

budget averages for projections

location	qty	mount	per	low			mid			high		
				sub	brass	brass	sub	brass	brass	sub	brass	brass
entry	2	wal	4	8	2450	3063	4134	4900	6125	8200		
garage	1	wal	4	8	1150	1438	1941	2300	2875	3881		
pantry 117	2	wal	4	4	1150	1438	1941	1150	1438	1941		
Kitchen	2	wal	4	8	1150	1438	1941	2300	2875	3881		
outdoor living 122	2	o.s.	4	8	1275	1594	2152	2550	3188	4303		
living room 112	2	o.s.	4	4	1150	1438	1941	2550	3188	4303		
master rear balcony	1	wal	4	4	1150	1438	1941	1150	1438	1941		
office 208	1	wal	4	4	1150	1438	1941	1150	1438	1941		
pool bath	2	wal	4	8	1150	1438	1941	2300	2875	3881		
dining patio tp outdoor living	1	wal	4	4	1150	1438	1941	1150	1438	1941		
vestibule 108	1	pendant	4	4	3680	4800	6210	3680	4800	6210		
outdoor living over seating	1	linear or foil	1	1	350	438	591	350	438	591		
trash enclosure	2	sc	2	4	2100	2825	3544	4200	5250	7088		
outdoor f.p @ pool seating								\$33,180	\$41,475	\$55,991		

see all pages continued:

interior

Living room 112 w dining	3	pendant	1	3	2450	3430	4802	30000	42000	111000		
island	2	sc	1	2	1100	1540	2158	7350	10290	14406		
powder 115	2	sc	1	2	2100	2940	4116	2200	3080	4312		
outdoor living 112	2	sc	1	2	1150	1610	2254	4200	5880	8232		
bath 215	1	pendant	8	8	2240	3136	4320	2300	3220	4506		
stair 108 entry	1	ch	8	6	2800	3840	5096	2240	3136	4320		
master bath 203 over tub	1	ch	8	6	2800	3840	5096	2900	3840	5096		

see all pages continued:

Bulbs

Plaster Lighting & landscape lights

motor court gate	2	o.g.	1	2	1175	1645	2303	2350	3290	4606		
seating at frepit	2	o.g.	1	2	1175	1645	2303	2350	3290	4606		
outdoor seating @ kitchen	1	lamp	1	1	2400	3360	4704	2400	3360	4704		
island @ outdoor kitchen	2	o.c.	1	2	1180	1652	2313	2360	3304	4626		
outdoor kitchen	1	linear	1	1	1200	1680	2352	1200	1680	2352		
trees below pool (pendant in all 3 trees)	32	tree	0.5	16	350	490	686	11200	15680	21952		
misc landscape lighting	24		0	0	350	490	686	8400	11760	16464		

see all pages continued:

Illuminated walls

lumicor design & install oversite	1				2400	3360	4704	2400	3360	4704		
wine room behind racks product	1				14400	20160	28224	14400	20160	28224		
outdoor spa - product	1				8000	9400	11760	8000	9400	11760		

see all pages continued:

Adorne Legrand switches

lighting plan consultation	1				7850	10990	14287	9358	10990	14287		
can lights/ light and green or alternatives	1				4000	4000	4000	4000	4000	4000		

see all pages continued:

Pool side/ patio furniture

	1				180	180	180	180	180	180		
--	---	--	--	--	-----	-----	-----	-----	-----	-----	--	--

Installation by others

see next sheet for project totals

dwg fee as needed	x	21	see fixture	\$5,250	\$5,250	\$5,250	21
revised drawings	x	130	per drawing				
only lights sub total				\$84,070			
Bulbs				\$6,100	\$6,100	\$6,100	244
Budget House Ext lanterns				\$33,180	\$41,475	\$55,991	23
Adorne Legrand switches				\$13,358	\$14,990	\$18,287	1
Budget Interior Lights				\$50,890	\$71,246	\$153,754	14
Budget Plaster/ landscape lights				\$30,260	\$42,364	\$59,310	64
Illuminated walls				\$22,800	\$31,920	\$44,688	3
Galvanizing/ chem disposal fee				\$1,520	\$1,520	\$1,520	
38 boxing/ crating per item				\$3,600	\$3,600	\$3,600	
estimated freight/ handling to client				\$2,470	\$2,691	\$3,250	
5% temporary material surcharge due to tariffs				7,524	10,100	16,801	
freight insurance				\$410	\$110	\$110	

see all pages continued:

bulbs	sub total	\$176,762	\$231,366	\$368,466
0.50% tax		\$16,792	\$21,880	\$35,004
Grand Total		\$193,555	\$253,345	\$403,471
60% deposit		\$116,133	\$152,007	\$242,082

payment to:
 ADG Lighting
 29309 Agoura Road #210
 Agoura Hills, CA 91301

RESALE

please make 60% deposit for category Low, Mid or High & a specific package total
 *this order subject to ADG terms and conditions. 6-8 week lead time R.O.D. approval of drawings - see flow chart
 *this order is based on a bundle package for best pricing - with exception to indoor furniture

this screen describes
 the adg low-mid-high
 price structure &
 budget review

SCHULTZ RESIDENCE

25232 PRADO DE LA PUMA CALABASAS, CA

THE DRAWINGS AND SPECIFICATIONS ARE THE PROPERTY AND COPYRIGHT OF THE DESIGNER AND SHALL NOT BE USED ON ANY OTHER WORK WITHOUT THE WRITTEN APPROVAL OF THE DESIGNER.

ANY CHANGES SHALL BE MADE ONLY ON THE JOB BY THE CONTRACTOR'S REPRESENTATIVE TO THE SATISFACTION OF THE DESIGNER.

WALL LEGEND

IT'S BEST
This is a preliminary plan based on field site visit.

Specific can lights and locations of fixtures must be approved and marked as job.

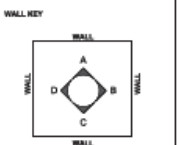
Site visits needed to determine additional locations and replacement of can lights and surface lights.

This set is not approved for construction.

Note: All cans to be either 500w or 100w and gully placement thru floor lighting.

All new walling to be L-shaped surfaces and ceiling (LSC).

ACG fixtures are still needed lighting is preliminary to approved equipment and fixture lighting is needed.

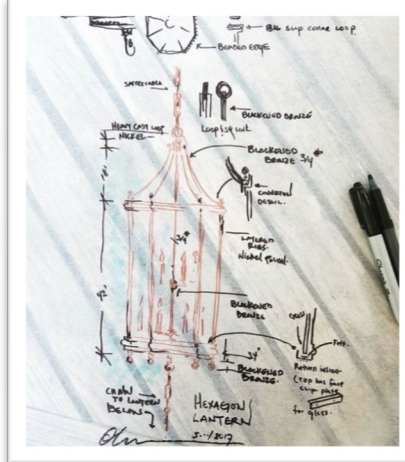
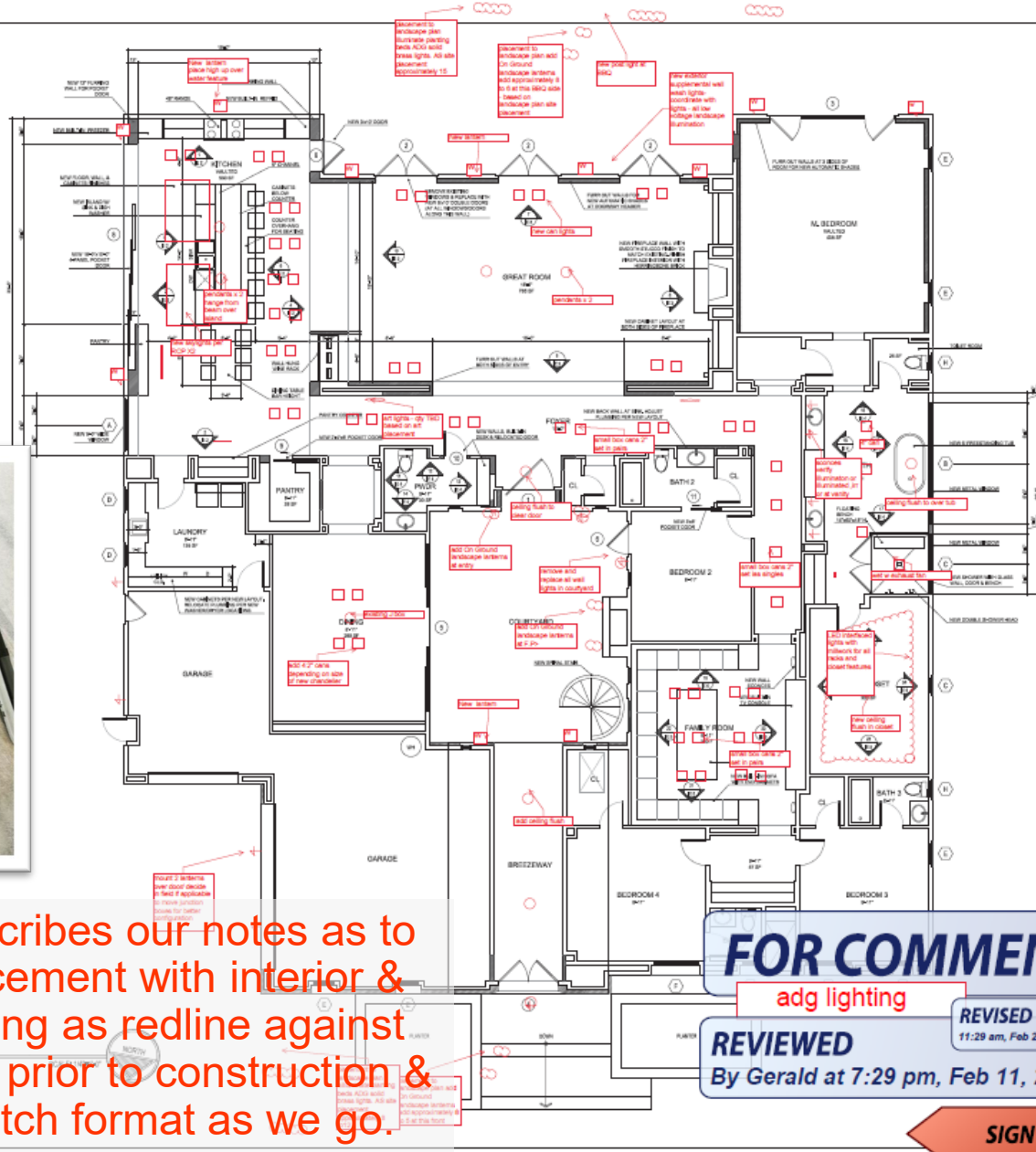


SHEET TITLE

PROPOSED FLOOR PLAN

DRAWING NO. **A2.1**

PROJECT	SCHULTZ RESIDENCE
DATE	02/06/2019
SCALE	AS SHOWN
DRAWN BY	



WALL LEGEND

- NEW WALLS 1/2" MIN. THICK
- EXISTING WALLS 1/2" MIN. THICK
- NEW WALLS 1/2" MIN. THICK
- EXISTING WALLS 1/2" MIN. THICK

this screen describes our notes as to the proper placement with interior & perimeter lighting as redline against the original plan prior to construction & thinking in sketch format as we go.

FOR COMMENT

adg lighting
REVIEWED
 By Gerald at 7:29 pm, Feb 11, 2019

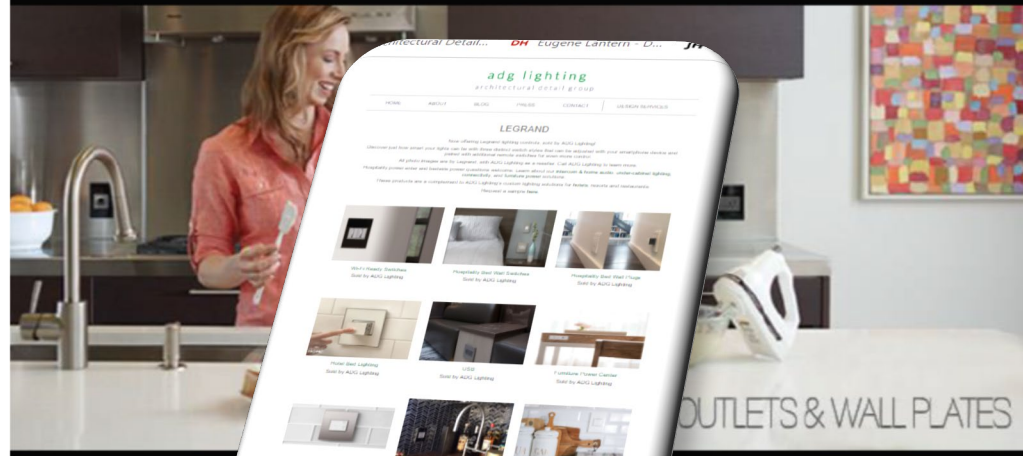
REVISED
 11:29 am, Feb 26, 2019

SIGN HERE



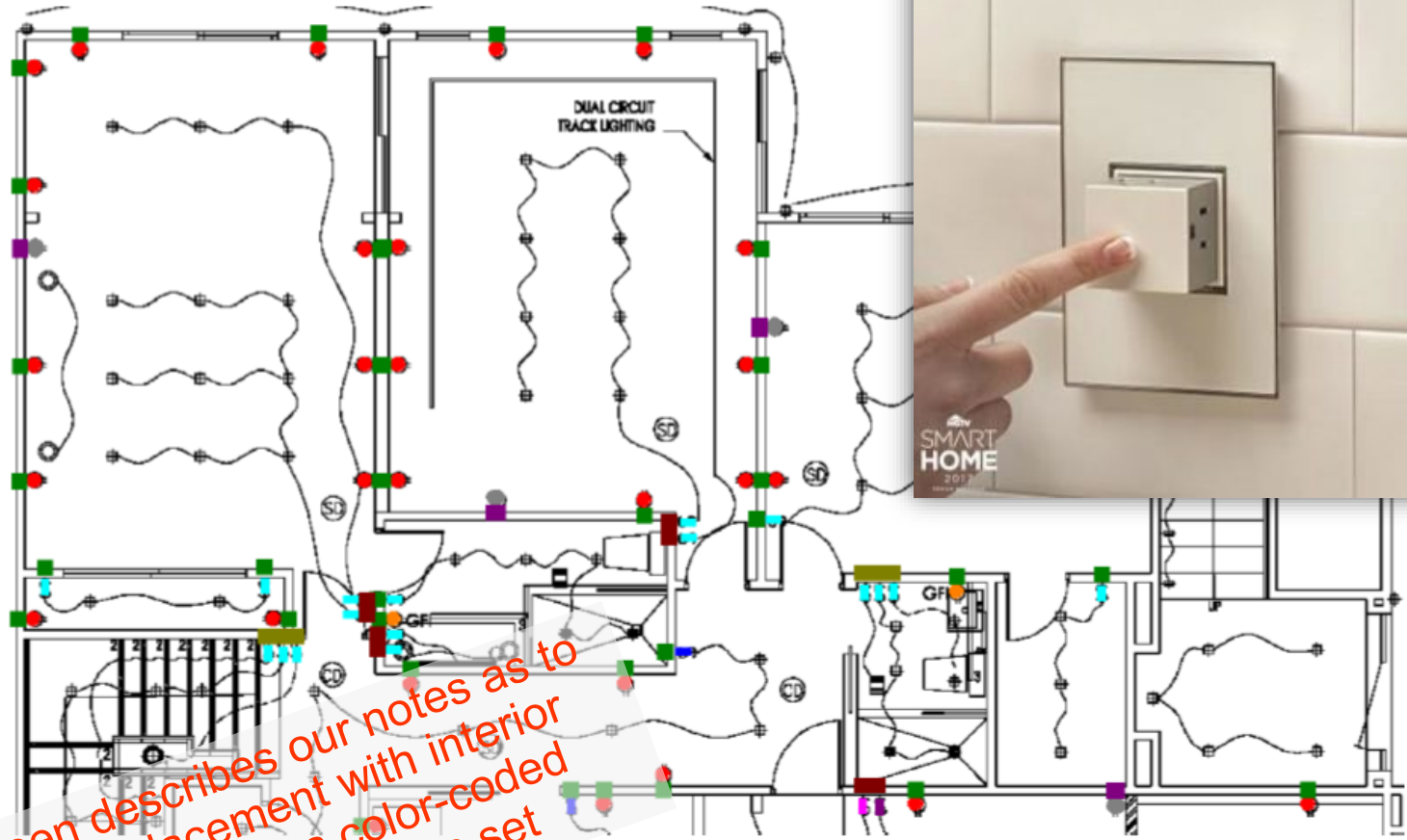
adorne™ Device Proposal

Scott Blunt
 Adorne Project Services
 PH: (315) 468-8413
 adornemyproject@legrand.us



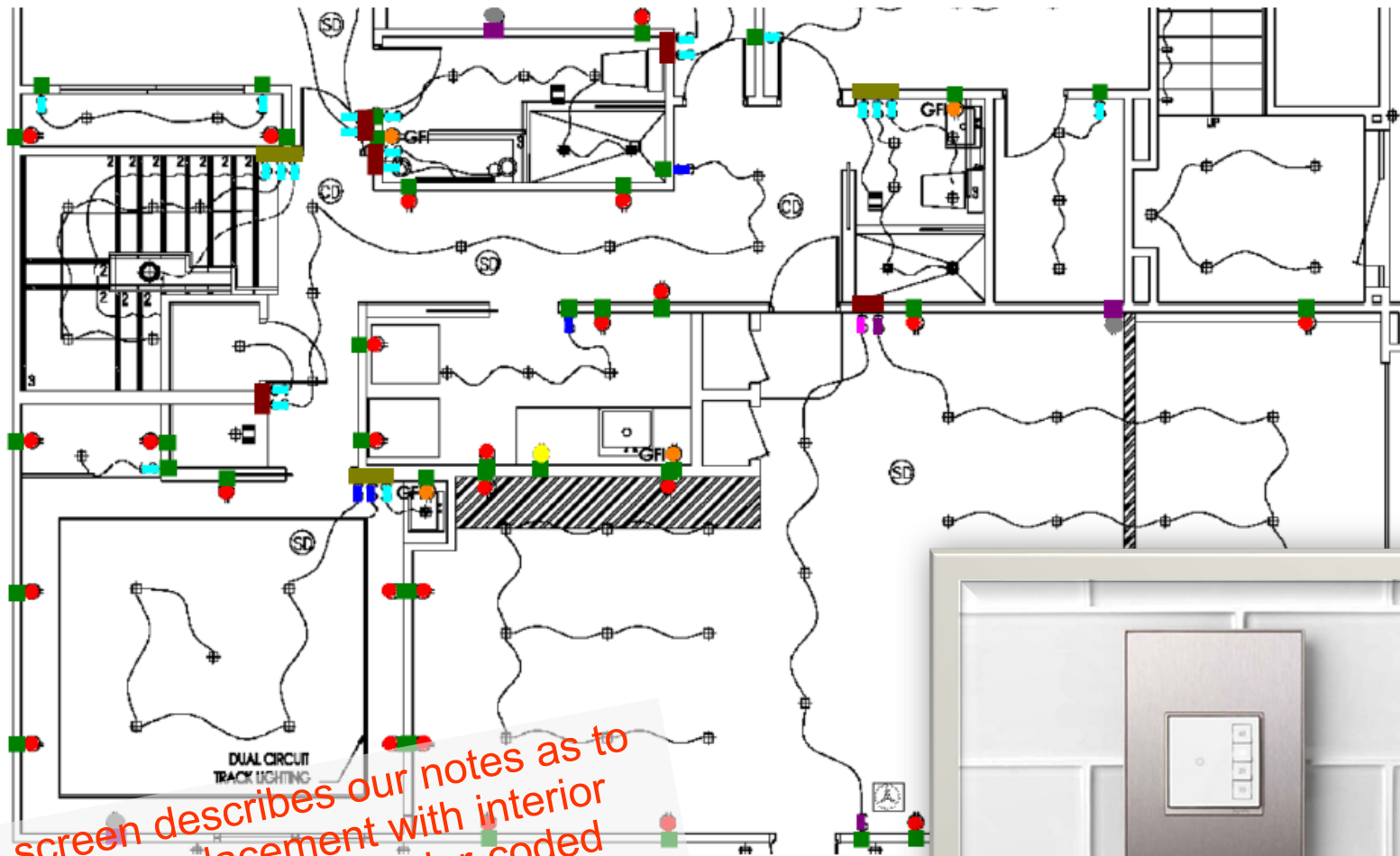
<input type="checkbox"/>	Outlets
	AGFTR2152W4_GFCI TR Outlet
	ARTRUSB153W4_Dual-USB Outlet
	ARPTR151GW2_Pop-Out Outlet 1-Gang
	ARTR152W4_TR Outlet
<input type="checkbox"/>	Switches(SofTap)
	ADTP700RMTUW1_sofTap TU Wi-Fi Master Dimmer
	ADTPRRW1_sofTap Wi-Fi Remote Dimmer
	ADTP703TUW4_sofTap Dimmer
	ASTP1532W4_sofTap Switch Single Pole/3-Way
<input type="checkbox"/>	Wall Plates: Plastic
	AWP1G2WH10_Gloss White, 1-Gang Wall Plate
	AWP1G3WH4_1+Gang Wall Plate
	AWP2GWH10_2-Gang Wall Plate
	AWP3GWH4_3-Gang Wall Plate

1st Floor - Image 1



this screen describes our notes as to the proper placement with interior Legrand controls as color-coded against the original plan set

1st Floor - Image 2



this screen describes our notes as to the proper placement with interior Legrand controls as color-coded against the original plan set



lumicor wall info



SOLUTION

Since this was a hardware-driven project, an open dialog between Lumicor's engineering team and the artist was paramount. The artist understood the capabilities of the construct and supported the

Chosen for the aesthetics, and the panels were cut to which overlap at the center creating a representation of an agave plant. The sculpture's appearance of the piece added depth, integrating the sculpture with the building's breezeway.

RESULT

A striking work of art that complements both the style and elegance of PCDS.



adg is an Architectural Integrator & partnered dealer using Lumicor in unique settings for our client base



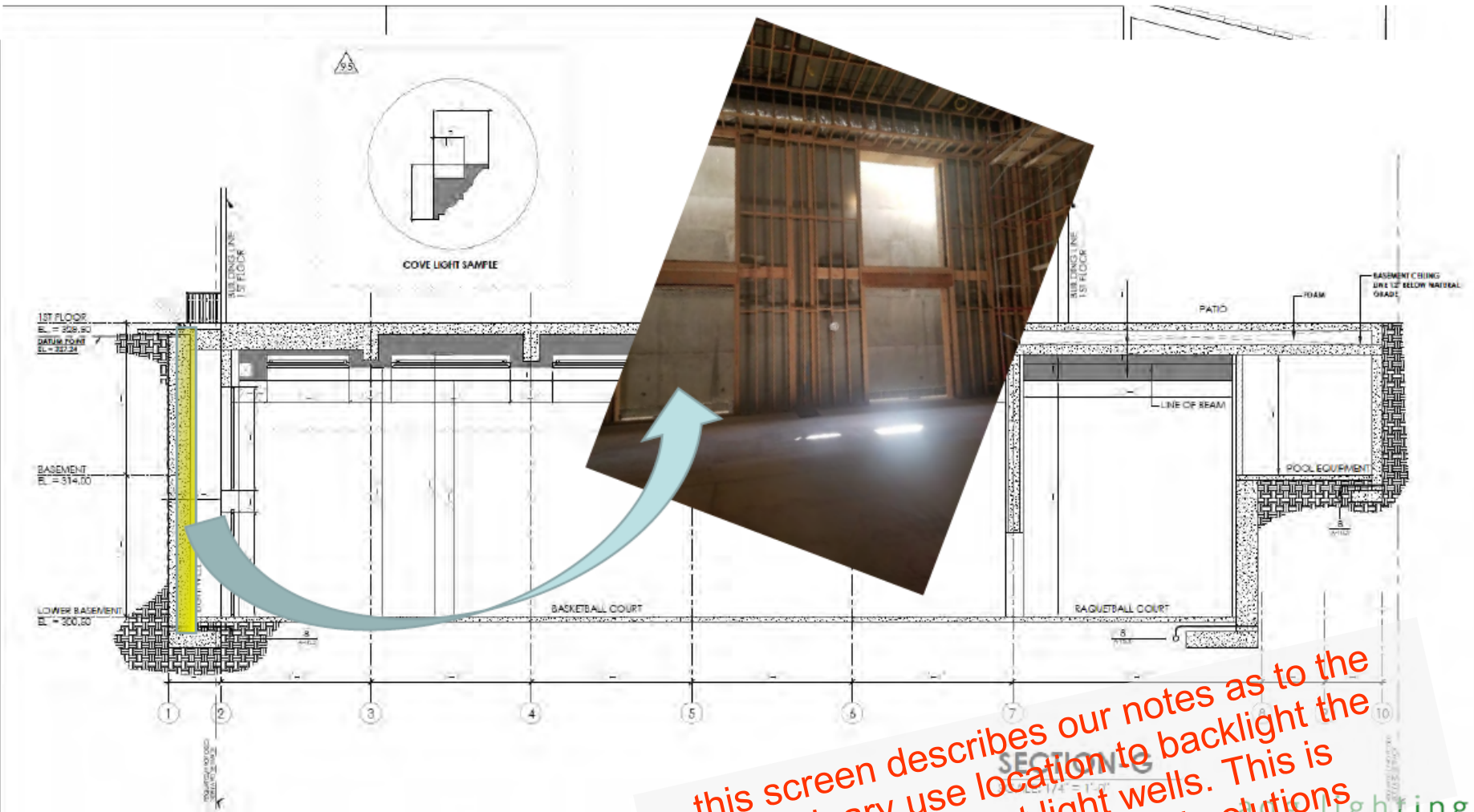
- **Basket ball court light well**
 - With and without DMX controlled lighting as discussed
 - Lumicor to provided programming + install oversite
 - Alternatives with graphics wall vs – gem colored-vs crushed glass Lumicor product
- **Basket ball court stair wall to Party Mezzanine**
 - With and without DMX controlled lighting as discussed
 - Lumicor to provided programming + install oversite
 - Alternatives with graphics wall vs – gem colored-vs crushed glass Lumicor product
- **Possibly additional light well at inside pool**
 - With and without DMX controlled lighting as discussed
 - Lumicor to provided programming + install oversite
 - Alternatives with graphics wall vs – gem colored-vs crushed glass Lumicor product

- **Goal – need approximate Low/ Medium/ High potential price points**
- **Directive as to what it takes to install this product at each location**

Following sheets are prelim mark ups for sporting complex basement using Lumicor

adg lighting
architectural detail group

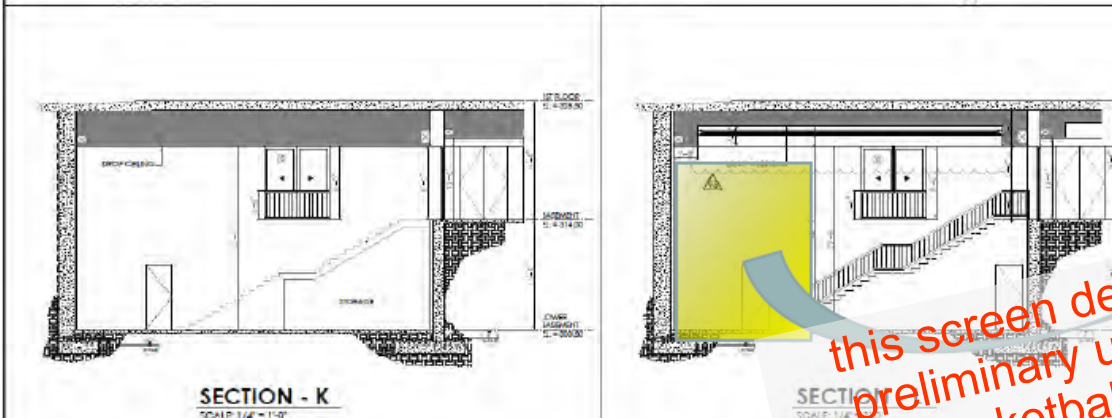
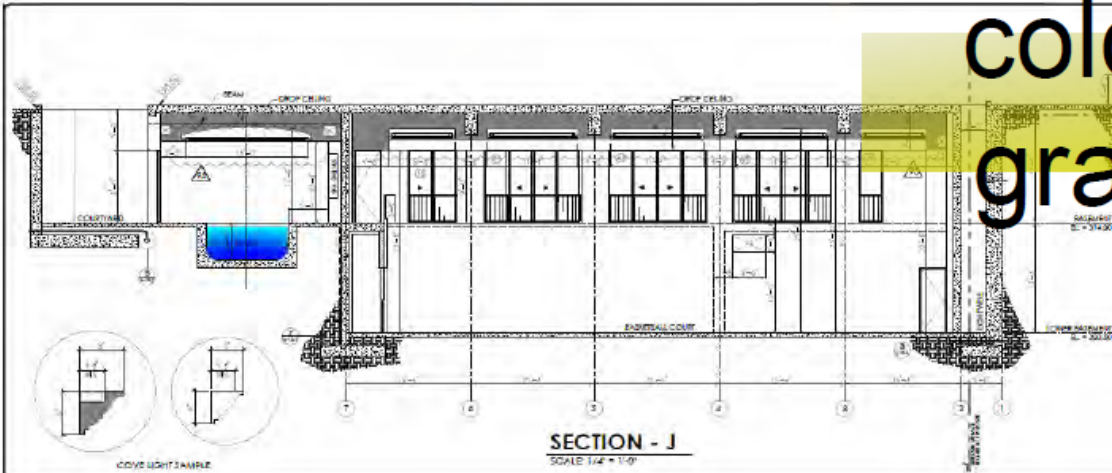
631 crescent 4-23-2019



631 crescent 4-23-2019

this screen describes our notes as to the preliminary use location to backlight the basketball court light wells. This is preliminary to engineered solutions

Simple tone on colored lumicor graphic for this wall

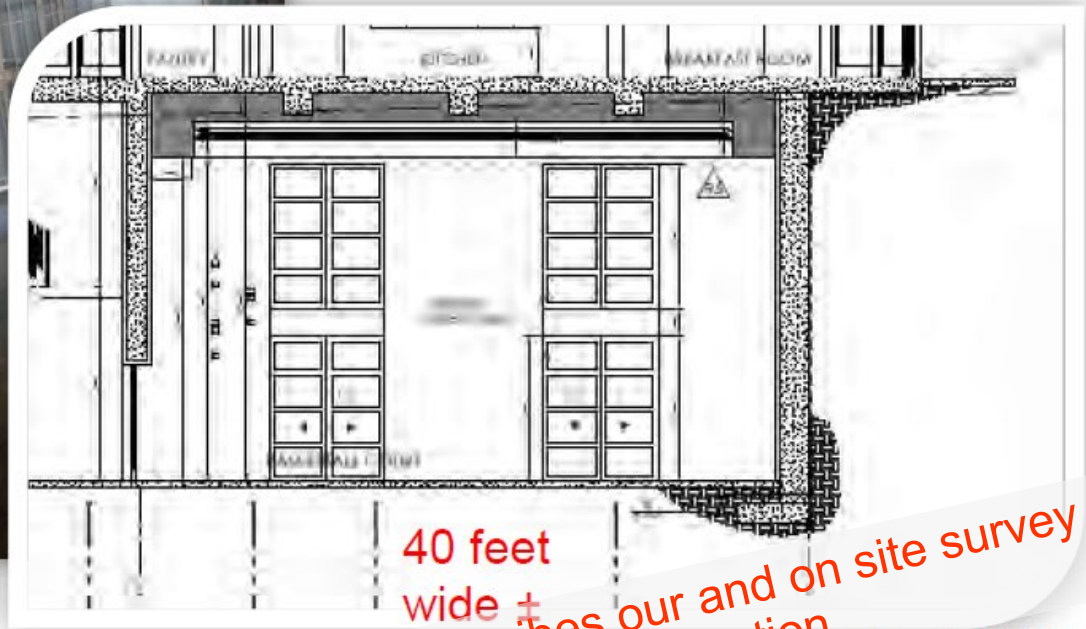
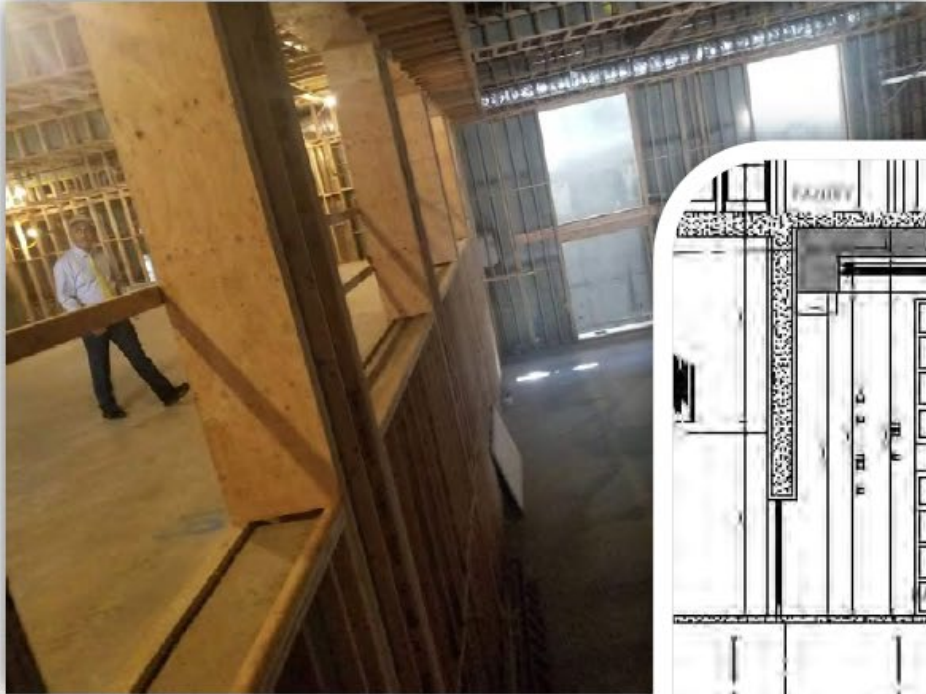


this screen describes our notes as to the preliminary use location to backlight the basketball court light wells. This is preliminary to engineered solutions

631 crescent 4-23-2019

adg lighting
architectural detail group

Basket ball court light well

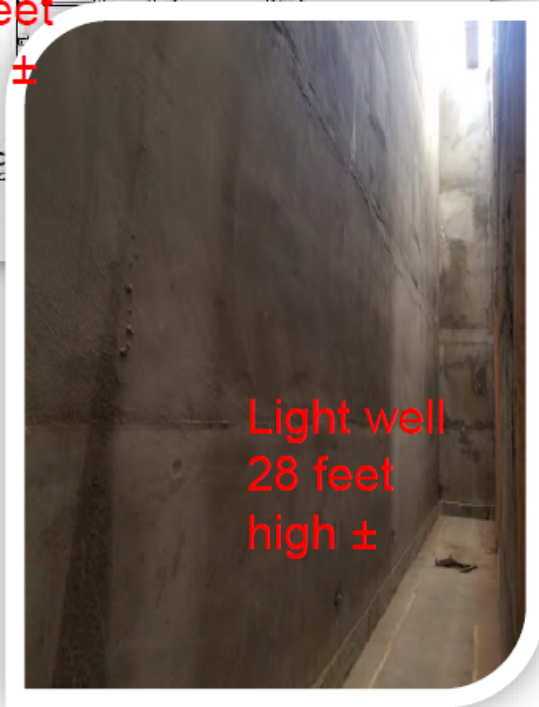
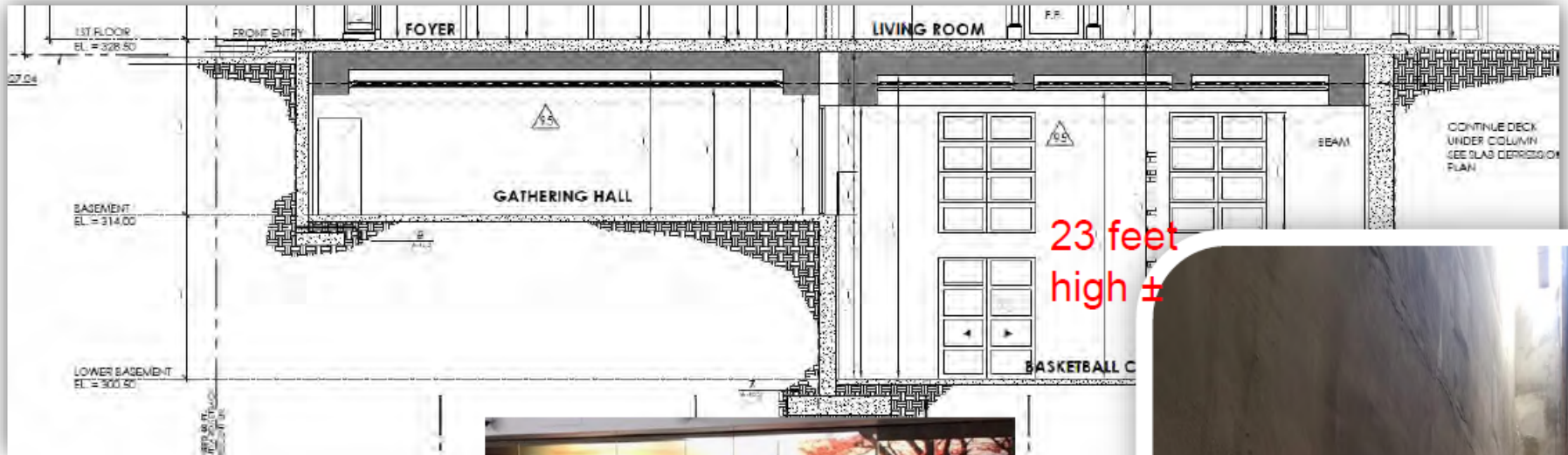


40 feet
wide ±

*this screen describes our and on site survey
during construction*

631 crescent 4-23-2019

adg lighting
architectural detail group



23 feet high ±

Light well 28 feet high ±

Ideal is to use a nature scene with DXF controlled color to simulate nightscape and sunrise lighting

adg lighting
architectural detail group

631 crescent 4-23-2019

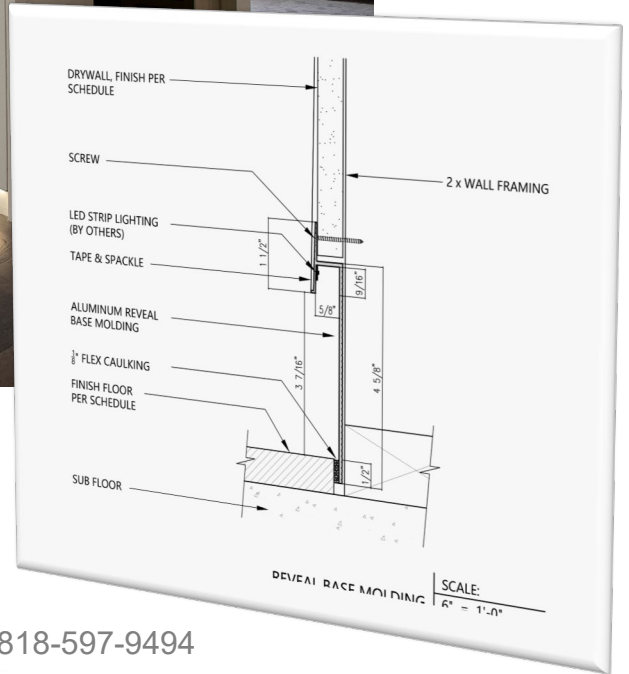
Crush glass light up as alternatives



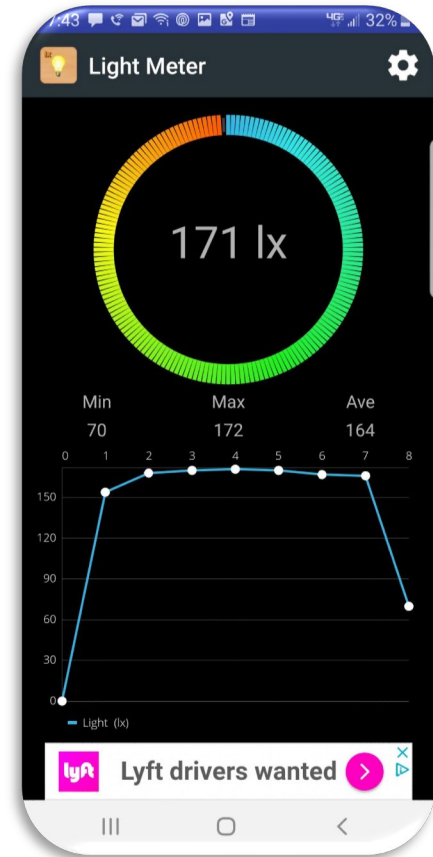
631 crescent 4-23-2019

adg lighting
architectural detail group

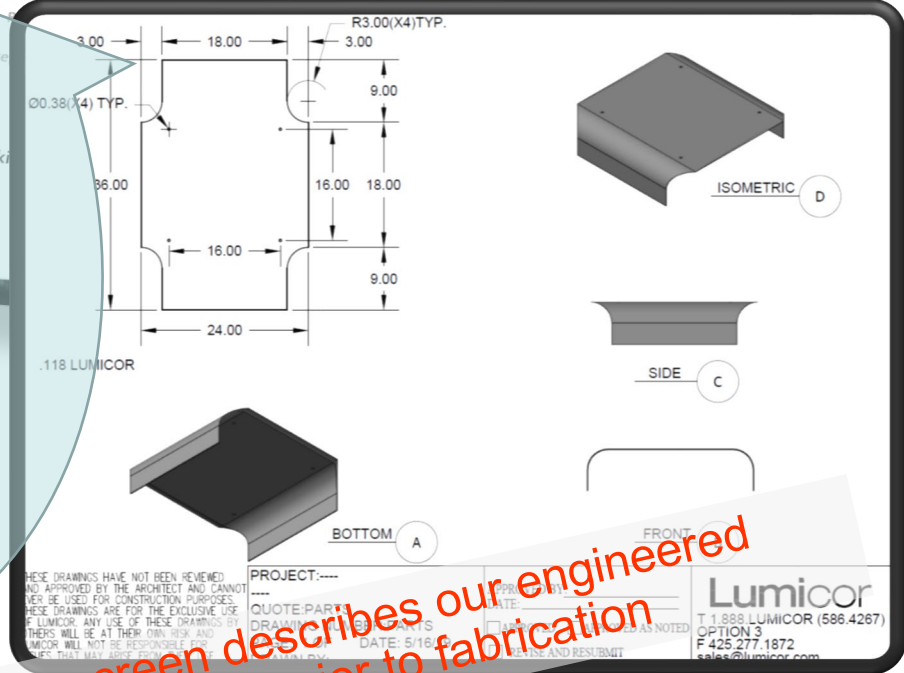
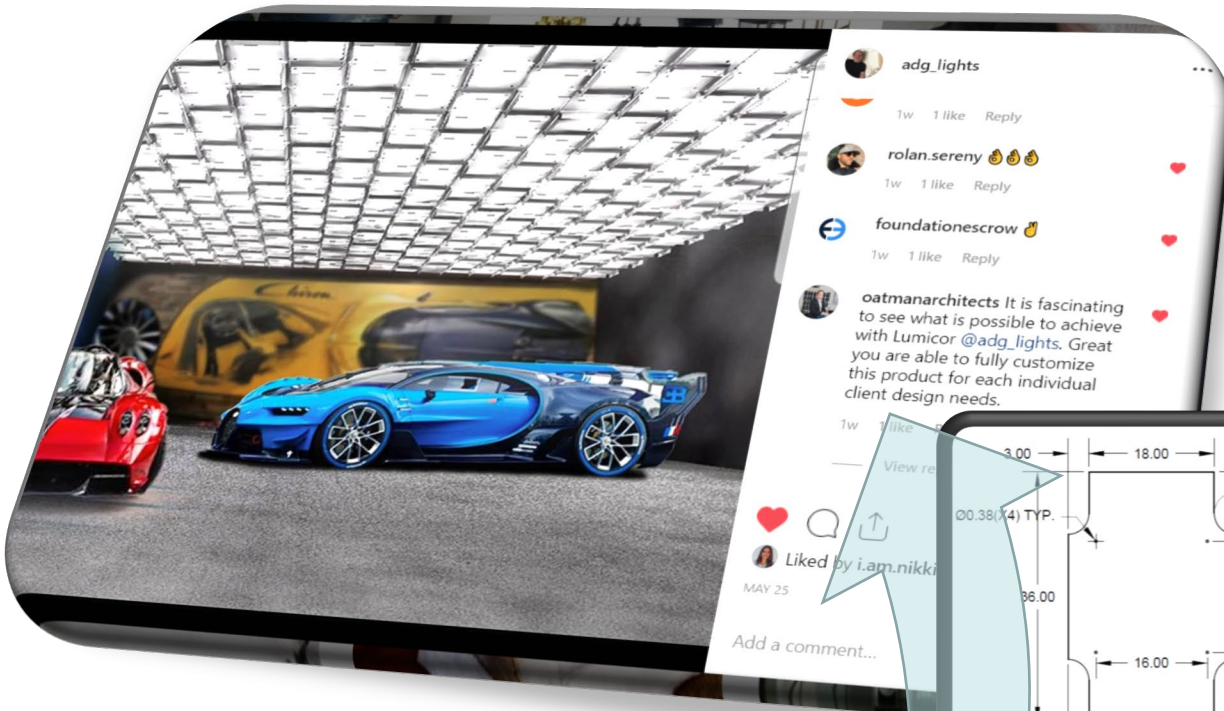
Architectural Detail Group, Inc.  ADG Lighting – 818-597-9494
fixtures & details all rights reserved ©2015



this screen describes our engineered solution for extruded base shoe LED



Issue is illumination spotting & glare
Solution is complete reduction



• [oatmanarchitects](#)
It is fascinating to see what is possible to achieve with Lumicor @adg_lights. Great you are able to fully customize this product for each individual client design needs.
1w

this screen describes our engineered solution prior to fabrication



Illuminated/ iconic La Canada Estate with RTA



Architectural Detail Group, Inc  ADG Lighting – 818-597-9494
fixtures & details all rights reserved © 2019



Greenwald



#102



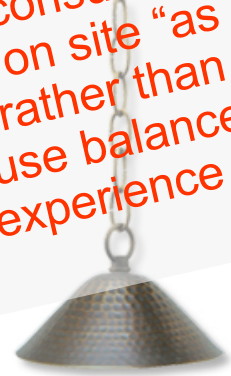
#283

this screen describes our conceptual variations for site placement of landscape lanterns, placed via job walk – but preferred to do in planning stages.

adg ~ on ground lanterns



this entire project from lighting consulting curbside to pool side was done on site "as we go" with presented options rather than planned – total cost for spec house balanced prior to engagement based on experience of adg



NEW



DECK LIGHT LED INTEGRATED

INFORMATION:

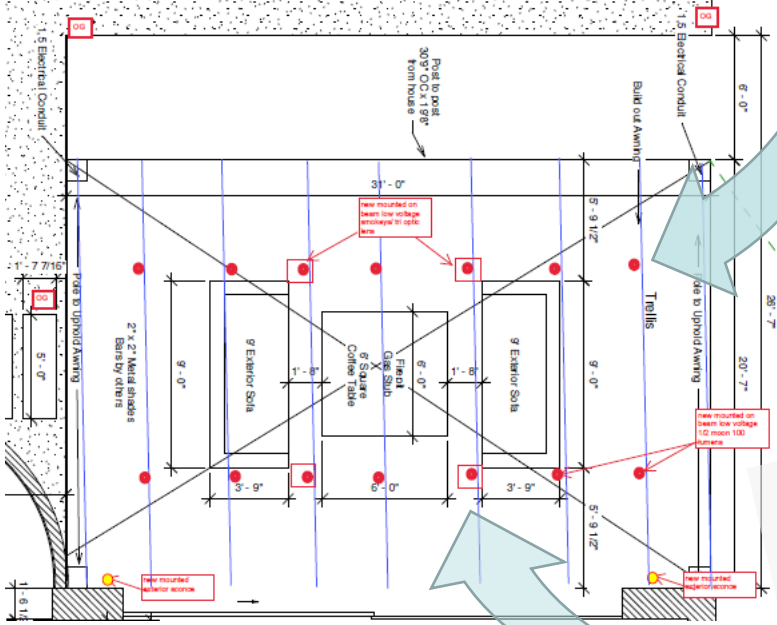
MODEL#: FG2512-77
 DESC.: Deck Light LED Integrated
 DIMS: 3-7/8"D x 1-5/8"E
 FINISH: Foundry Bronze
 COLOR / CCT: 2,700K
 WATTAGE: 3W
 LUMENS: 100
 WARRANTY: 5 Years

SPECIFICATIONS:

VOLTAGE: 12V
 LAMP LIFE (RATED): 25,000hrs
 CRI: >80
 EFFICACY: 33.33lm/W
 DIMMABLE: No
 MATERIAL: Die Cast Brass
 Includes 36in. Leads SPT-1 18#

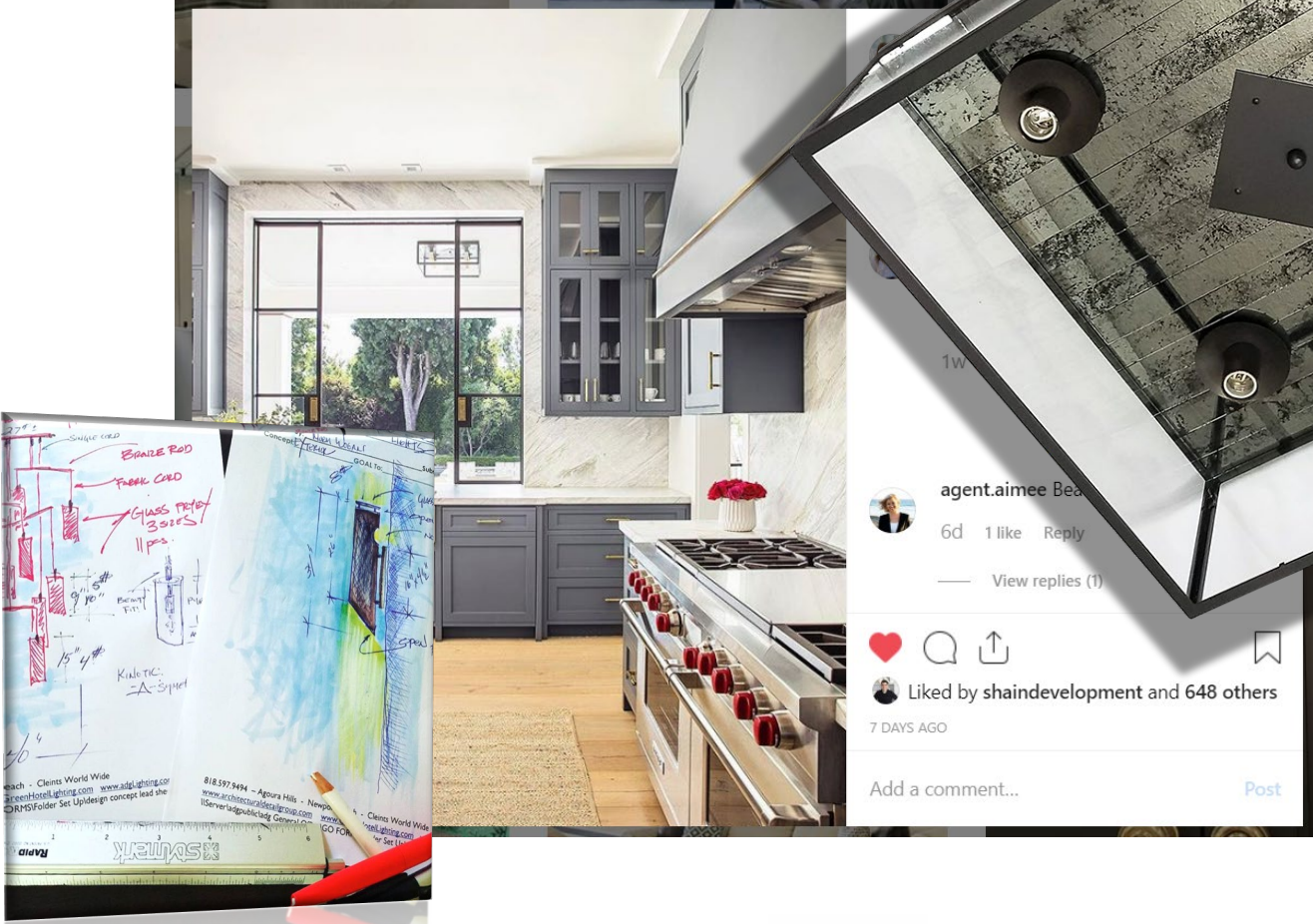
Brightness
100
Lumens

Estimated
Energy Cost
\$0.36
Per Year

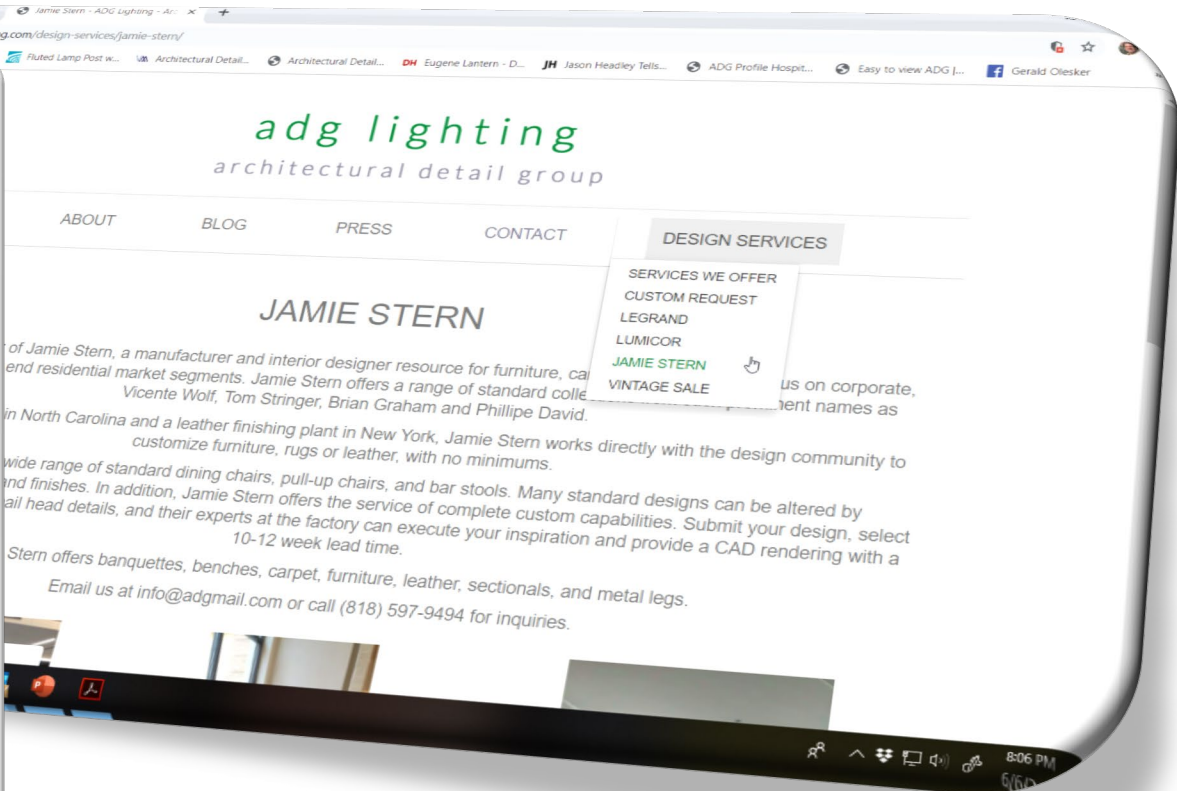
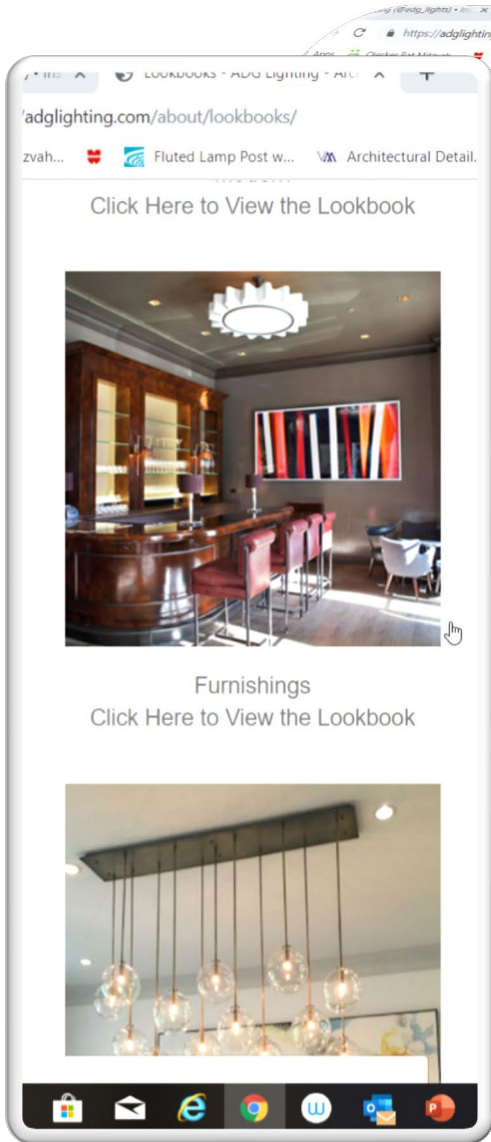


In trellis
 this screen describes our conceptual variations for exterior landscape integrated placement of lighting as redlined plan set

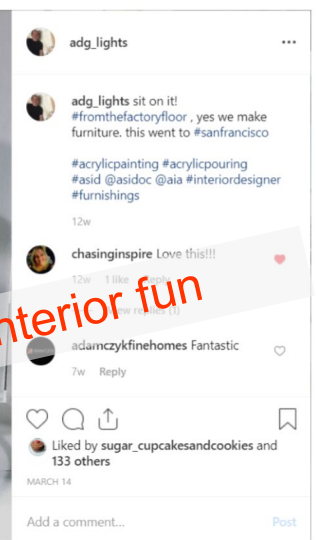
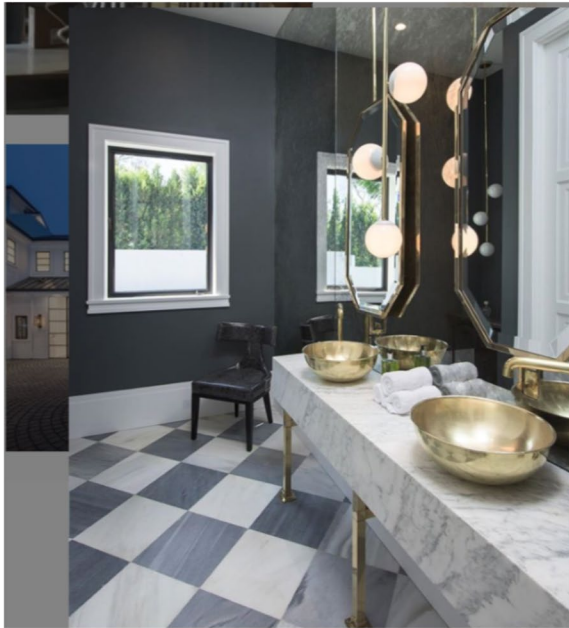
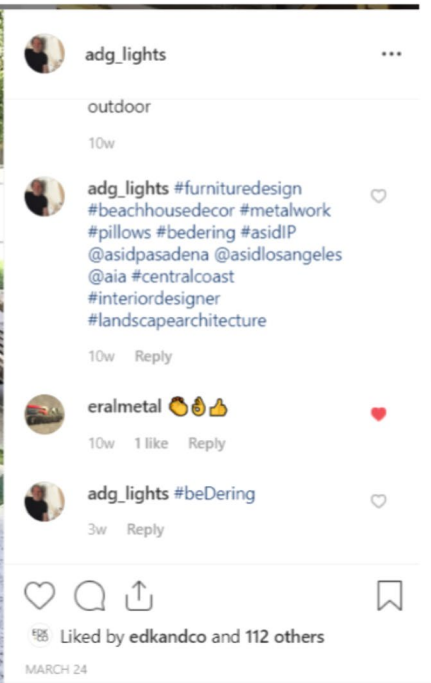
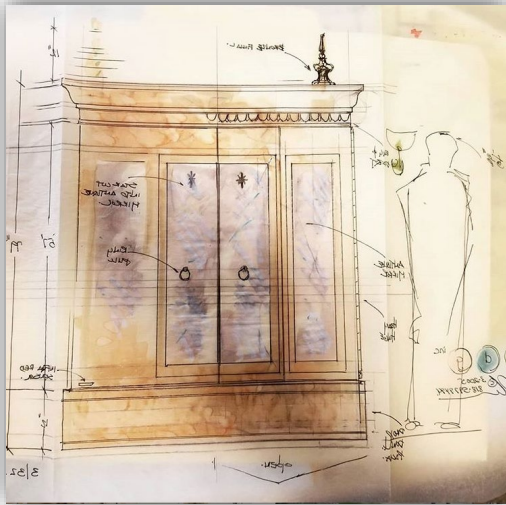
adg is truly about the design process



Architectural Detail Group, Inc  ADG Lighting – 818-597-9494
fixtures & details all rights reserved © 2019



**Additional scopes as designing & fabricating
furnishings by ADG or as partnered with
Jamie Stern Furnishings - #madeinUSA**



mirror, outdoor furniture & interior fun

this presentation is a mash up of multiple projects & describes several ways we provide information – communicate & collaborate

our base line is the same –we consult design & fabrication with our ADG team

architecture & interior design
collaborated with others

Lighting
Iron - Furniture
Sculpture
Legrand – Lumicor
LED

www.ArchitecturalDetailGroup.com

www.adgLighting.com

info@adgmail.com

818-597-9494

newport beach ` agoura hills

