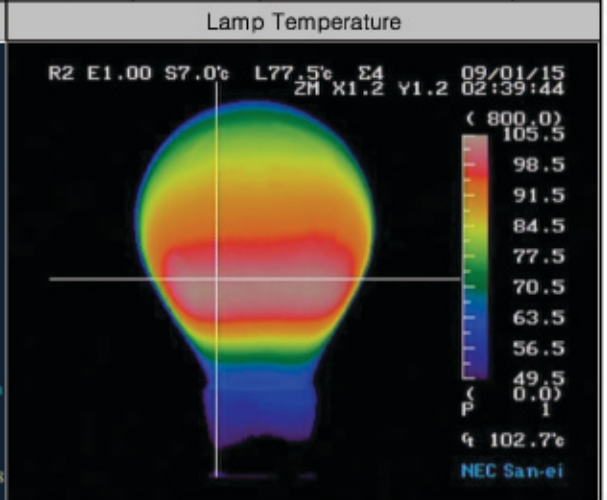
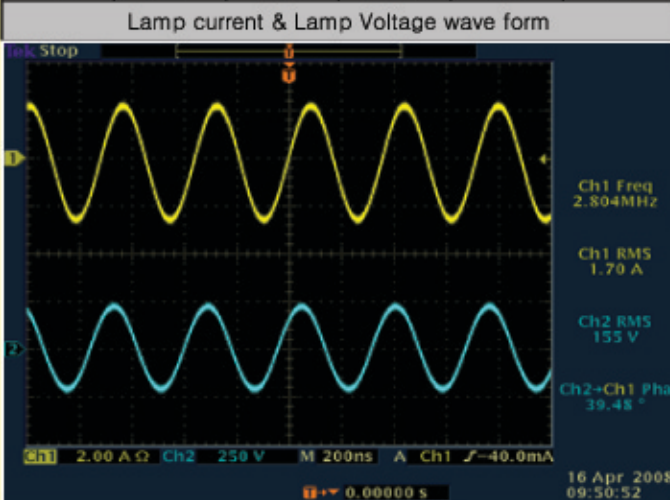


The technical Report of 150W Induction system

- * Purpose : Check up the technical data of 150W induction system
- * Test glass : ADGeco induction 150W
- * Test Generator : ADGeco induction 150W
- * Measurement equipments : WT-210, TDS 3034, P5205, TCP202, NEC IR Camera
- * Date : January 15 2009
- * Place : R&D center team #1
- * Tester : Do-yoon Kim

Induction system of 150W

Vin[V]	Iin[mA]	p.f[%]	Watt[W]	Vlamp[V]	Ilamp[A]	fo[MHz]	Phase	Bulb's Temperature[°C]	Remark
220	658	98.7	145.5	155	1.7	2.65	39.48	102.7	

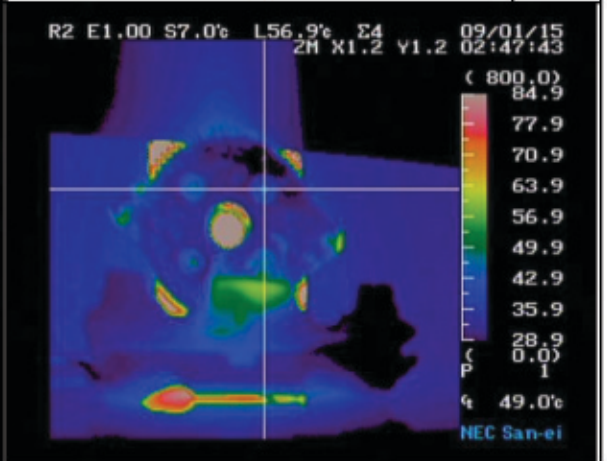
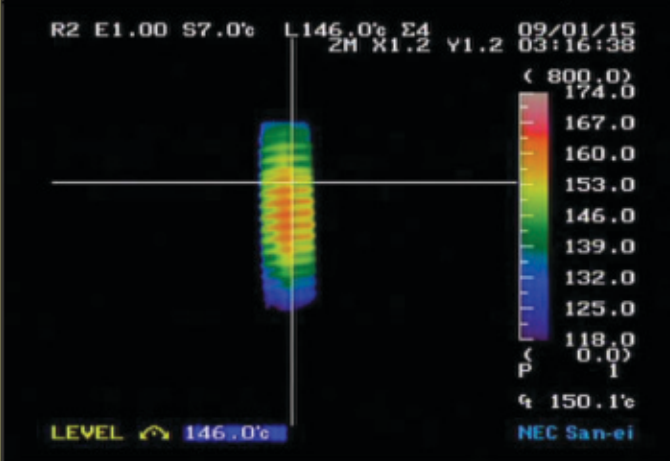


Power coupler Temperature

Power coupler Temperature[°C]	Remark
150.1	

Heatsink Temperature

Bottom of heatsink Temperature[°C]:screw point	Remark
49	



Lamp Base Temperature(nearby bulb)

Lamp Base Temperature(nearby bulb)	Remark
58.2	

Bottom of power coupler Temperature[°C]

Bottom of power coupler Temperature[°C]	Remark
72.4	

